



卫生型不锈钢蝶阀

ITEM 490-492-493-494

Stainless steel butterfly valve with ISO 228/1 threaded, butt weld or DIN 11851 ends

不锈钢卫生型蝶阀，螺纹连接，对焊或DIN 11851接口

Standard executions:

The valve is manufactured in AISI 304 stainless steel and it's suitable for food industries.

Working temperature: from 0°C to +150°C

Working pressure: PN6

Fluid range: food industry.

Connections: - GAS threads as per DIN/ISO 228/1;
- DIN 11851 threads for food industry;
- to be butt-welded as per DIN 11850-1;

Surface treatment: polished.

执行标准:

蝶阀为不锈钢304材质，适合食品行业应用。

工作温度: 0°C至+150°C

工作压力: PN6

流体范围: 食品工业

连接方式: - DIN/ISO 228/1标准的G螺纹连接;
- 食品工业的DIN 11851螺纹标准;
- DIN 11850-1标准的对焊连接;

表面处理: 抛光

On request:

Clamp connections BS 4825 (see type 494)

For other applications, please contact our technical department.

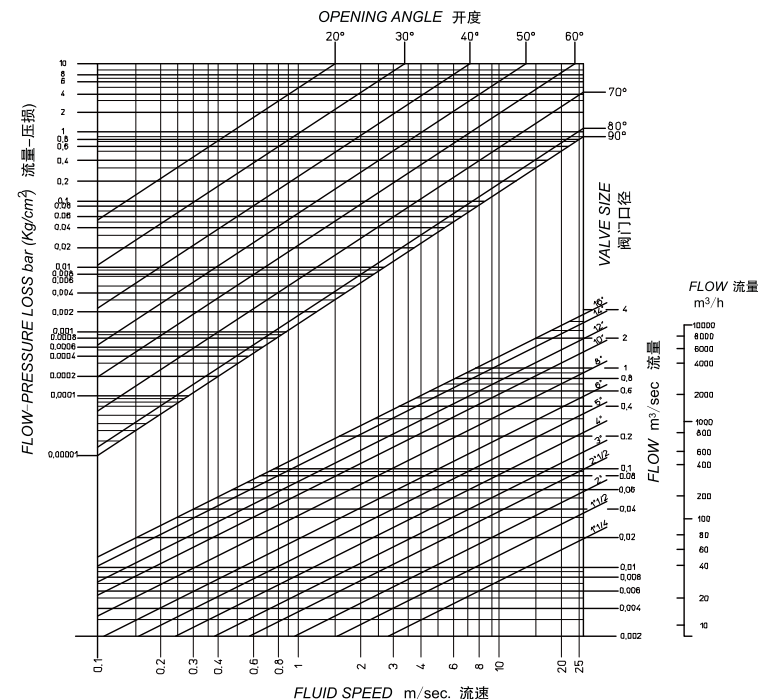
可选:

BS 4825卡箍式连接 (见494型)

其他应用, 请与我们技术部门联系。

VALVE CODES IN STANDARD EXECUTION 卫生型阀体和手动阀

Size 口径	DN 25	DN 32	DN 40	DN 50	DN 65	DN 80	DN 100	
Free shaft threaded 阀体 (螺丝连接 DIN ISO 228/1)	V490X406	V490X407	V490X408	V490X409	V490X410	V490X411	V490X412	
Free shaft threaded 阀体 (螺丝连接 DIN 11851)	V492X636	V492X637	V492X638	V492X639	V492X640	V492X641	V492X642	
Free shaft 阀体 (对焊连接 butt weld)	V493X756	V493X757	V493X758	V493X759	V493X760	V493X761	V493X762	
Free shaft 阀体 (卡箍式连接 clamp)	V494X006	---	V494X008	V494X009	V494X010	V494X011	V494X012	
weight 重量 Kg.	0,8	0,9	1,4	1,9	2,2	2,7	4	
with lever 手动阀 (螺丝连接 DIN ISO 228/1)	L490X406	L490X407	L490X408	L490X409	L490X410	L490X411	L490X412	
with lever 手动阀 (螺丝连接 DIN 11851)	L492X636	L492X637	L492X638	L492X639	L492X640	L492X641	L492X642	
with lever 手动阀 (对焊连接 butt weld)	L493X756	L493X757	L493X758	L493X759	L493X760	L493X761	L493X762	
with lever 手动阀 (卡箍式连接 clamp)	L494X006	---	L494X008	L494X009	L494X010	L494X011	L494X012	
weight 重量 Kg.	0,95	1,05	1,55	2,1	2,4	2,9	4,3	

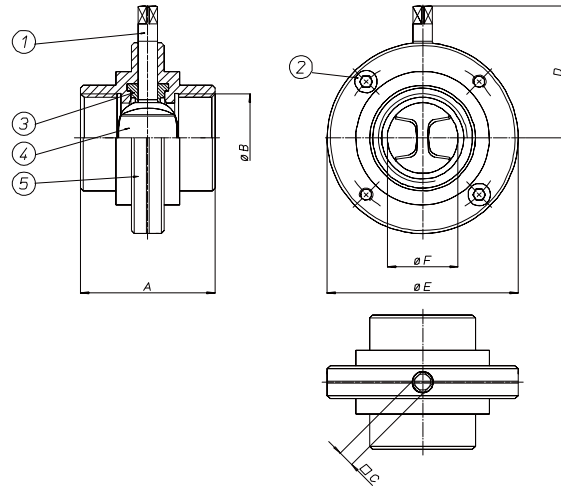


BREAK AWAY TORQUES In Nm 开启扭矩 Nm

Size 口径	DN25	DN32	DN40	DN50	DN65	DN80	DN100			
PN 0 bar										
PN 6 bar	7	9	15	18	33	65	71			
PN 25 bar										
PN 40 bar										

Torque can vary depending on temperature and type of fluid; a safety factor of 1.4 must be applied. Torque can drop on high frequency of operations. 开启扭矩与温度和介质有关, 应用时应考虑1.4倍的安全系数。在高频率操作下扭矩值会下降。

VALVE TYPE 490 490型蝶阀



ISO 228/1 threaded
ISO 228/1 螺纹连接

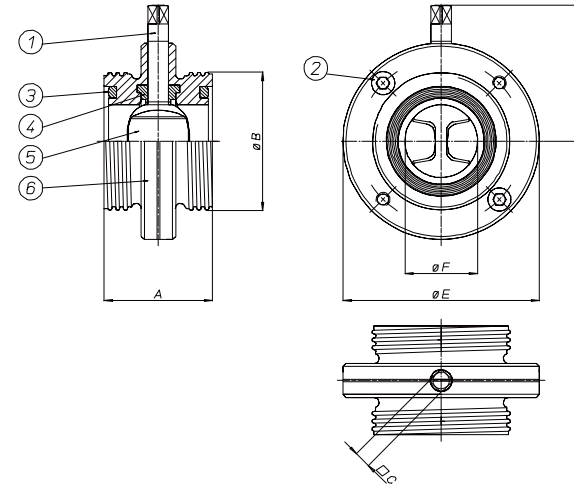
MATERIAL 材质表

1) Shaft 轴	AISI 304 不锈钢304	1.4301	UNI X5CrNi 18 10
2) Screws 螺钉	AISI 304 不锈钢304	1.4301	UNI X5CrNi 18 10
3) Seals 密封圈	Silicon 硅胶		
4) Butterfly 蝶片	AISI 304 不锈钢304	1.4301	UNI X5CrNi 18 10
5) Ends 端口	AISI 304 不锈钢304	1.4301	UNI X5CrNi 18 10

DIMENSIONS 尺寸表

Size 口径	A	B	C	D	øE	øF													
DN 25	68	1	9	57	79	25													
DN 32	76	11/4"	9	62	85	32													
DN 40	76	11/2"	9	64	92	40													
DN 50	80	2"	9	70	105	50													
DN 65	82	2 1/2"	9	80	125	65													
DN 80	84	3"	11	89	137	80													
DN 100	88	4"	11	101	157	100													

VALVE TYPE 492 492型蝶阀



DIN 11851 ends
DIN 11851 卫生接口

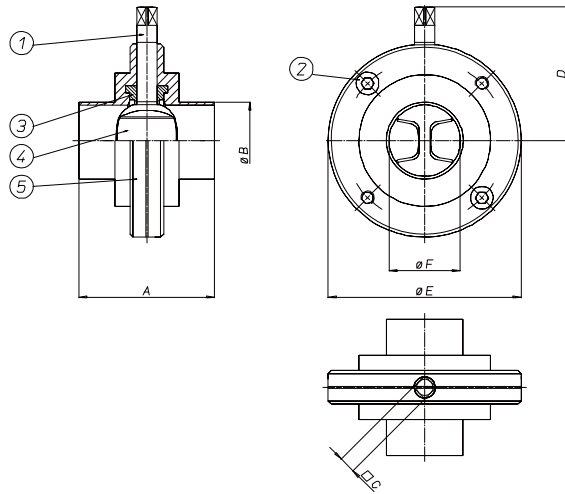
MATERIAL 材质表

1) Shaft 轴	AISI 304 不锈钢304	1.4301	UNI X5CrNi 18 10
2) Screws 螺钉	AISI 304 不锈钢304	1.4301	UNI X5CrNi 18 10
3) Seals 密封圈	Silicon 硅胶		
4) Internal seals 内部密封	Silicon 硅胶		
5) Butterfly 蝶片	AISI 304 不锈钢304	1.4301	UNI X5CrNi 18 10
6) Ends 端口	AISI 304 不锈钢304	1.4301	UNI X5CrNi 18 10

DIMENSIONS 尺寸表

Size	A	B	C	D	øE	øF													
DN 25	68	52X1/6	9	57	79	25													
DN 32	76	58X1/6	9	62	85	32													
DN 40	76	65x1/6	9	64	92	40													
DN 50	80	78X1/6	9	70	105	50													
DN 65	82	95x1/6	9	80	125	65													
DN 80	84	110X1/4	11	89	137	80													
DN 100	88	130X1/4	11	101	157	100													

VALVE TYPE 493 493型蝶阀



butt weld
对焊连接

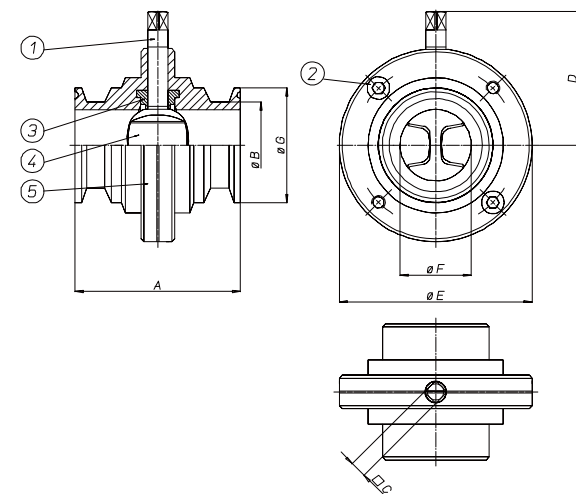
MATERIAL 材质表

1) Shaft 轴	AISI 304 不锈钢304	1.4301	UNI X5CrNi 18 10
2) Screws 螺钉	AISI 304 不锈钢304	1.4301	UNI X5CrNi 18 10
3) Internal seals 内部密封	Silicon 硅胶		
4) Butterfly 碟片	AISI 304 不锈钢304	1.4301	UNI X5CrNi 18 10
5) Ends 端口	AISI 304 不锈钢304	1.4301	UNI X5CrNi 18 10

DIMENSIONS 尺寸表

Size	A	B	C	D	øE	øF													
DN 25	68	28	9	57	79	25													
DN 32	76	34	9	62	85	32													
DN 40	76	40	9	64	92	40													
DN 50	80	52	9	70	105	50													
DN 65	82	70	9	80	125	65													
DN 80	84	85	11	89	137	80													
DN 100	88	104	11	101	157	100													

VALVE TYPE 494 494型蝶阀



Clamp
卡箍式连接

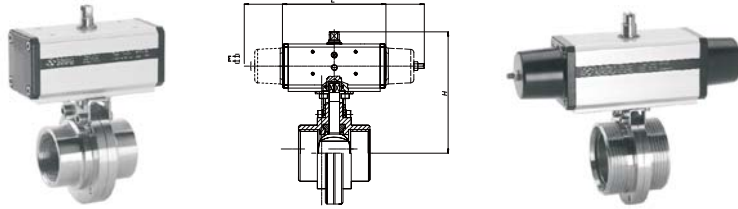
MATERIAL 材质表

1) Shaft 轴	AISI 316L 不锈钢316L	1.4401	UNI X5CrNiMo 17 12
2) Screws 螺钉	AISI 316L 不锈钢316L	1.4401	UNI X5CrNiMo 17 12
3) Internal seals 内部密封	Silicon 硅胶		
4) Butterfly 碟片	AISI 316L 不锈钢316L	1.4401	UNI X5CrNiMo 17 12
5) Ends 端口	AISI 316L 不锈钢316L	1.4401	UNI X5CrNiMo 17 12

DIMENSIONS 尺寸表

Size	A	B	C	D	øE	øF	øG												
DN 25	68	25,4	9	57	79	25	50,4												
DN 40	76	38,1	9	62	85	35	50,4												
DN 50	80	50,8	9	70	105	49	64												
DN 65	82	63,5	9	75	113	60	77,4												
DN 80	82	76,1	9	80	125	69	90,9												
DN 100	88	101,6	11	101	157	100	118,8												

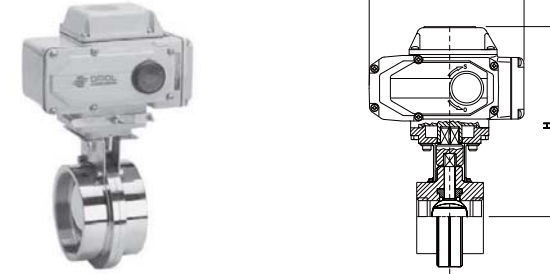
VALVE TYPE 490-2-3-4 490-2-3-4型蝶阀



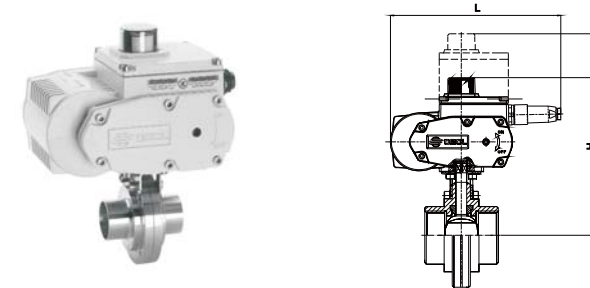
双气动型								
订货号	"F/F GAS"	D490H006	D490H007	D490K008	D490H009	D490K010	D490K011	D490K012
订货号	"F/F DIN"	D492H066	D492H067	D492K068	D492H069	D492K070	D492K071	D492K072
订货号	对焊焊接	D493H086	D493H087	D493K088	D493H089	D493K090	D493K091	D493K092
订货号	卡箍式	D494H006	-----	D494K008	D494H009	D494K010	D494K011	D494K012
DN	mm.	25	32	40	50	65	80	100
L	mm.	114	114	114	130	144	152	169
H	mm.	120,4	125,5	127,4	141,4	156,7	172,4	187,5
重量	Kg.	1,7	1,8	2,1	2,9	3,5	4,5	5,9
执行器		DA015401S	DA015401S	DA015401S	DA030401S	DA045402S	DA060402S	DA09401S
安装支架		KCF032252	KCF032252	KCF032252	KCF032252	KCF042254	KCF043376	KCF052256

单气动弹簧复位型								
订货号	"F/F GAS"	S490H006	S490H007	S490K008	S490H009	S490K010	S490K011	S490K012
订货号	"F/F DIN"	S492H066	S492H067	S492K068	S492H069	S492K070	S492K071	S492K072
订货号	对焊焊接	S493H086	S493H087	S493K088	S493H089	S493K090	S493K091	S493K092
订货号	卡箍式	S494H006	-----	S494K008	S494H009	S494K010	S494K011	S494K012
DN	mm.	25	32	40	50	65	80	100
L	mm.	221	221	221	240	294	320	357
H	mm.	128,4	133,4	135,4	151,4	168,5	194,4	216
重量	Kg.	2,3	2,4	2,6	3,8	4,7	9,4	10,6
执行器		SR015401S	SR015401S	SR015401S	SR030402S	SR045401S	SR060401S	SR090401S
安装支架		KCF032252	KCF032252	KCF032252	KCF042253	KCF052254	KCF053106	KCF072257

VALVE TYPE 490-2-3-4 490-2-3-4型蝶阀



电动开关型								
订货号	"F/F GAS"	C490A5E06	C490A5E07	C490A5E08	C490A5E09	C490A5G10	C490A5G11	C490A5I12
订货号	"F/F DIN"	C492A5E66	C492A5E67	C492A5E68	C492A5E69	C492A5G70	C492A5G71	C492A5I72
订货号	对焊焊接	C493A5E86	C493A5E87	C493A5E88	C493A5E89	C493A5G90	C493A5G91	C493A5I92
订货号	卡箍式	C494A5E06	-----	C494A5E08	C494A5E09	C494A5G10	C494A5G11	C494A5I12
DN	mm.	25	32	40	50	65	80	100
L	mm.	250	250	250	250	250	250	280
H	mm.	185	190	192	198	208	215	247,6
重量	Kg.	4,4	4,5	5	5,5	5,8	8,2	11,5
执行器		EA0035A5C000	EA0035A5C000	EA0035A5C000	EA0035A5C000	EA0070A5C000	EA0700A5C000	EA0130A5C000
安装支架		KCF052255	KCF052255	KCF052255	KCF052255	KCF052255	KCF053106	KCF052257



电动调节型								
订货号	"F/F GAS"	C490A5E06	C490A5E07	C490A5E08	C490A5E09	C490A5G10	C490A5G11	C490A5I12
订货号	"F/F DIN"	C492A5E66	C492A5E67	C492A5E68	C492A5E69	C492A5G70	C492A5G71	C492A5I72
订货号	对焊焊接	C493A5E86	C493A5E87	C493A5E88	C493A5E89	C493A5G90	C493A5G91	C493A5I92
订货号	卡箍式	C494A5E06	-----	C494A5E08	C494A5E09	C494A5G10	C494A5G11	C494A5I12
DN	mm.	25	32	40	50	65	80	100
L	mm.	250	250	250	250	250	250	280
H	mm.	249	254	256	259	272	279	311,6
重量	Kg.	4,4	4,5	5	5,5	5,8	8,2	11,5
执行器		EA0035A5C000	EA0035A5C000	EA0035A5C000	EA0035A5C000	EA0070A5C000	EA0700A5C000	EA0130A5C000
安装支架		KCF052255	KCF052255	KCF052255	KCF052255	KCF052255	KCF053106	KCF052257